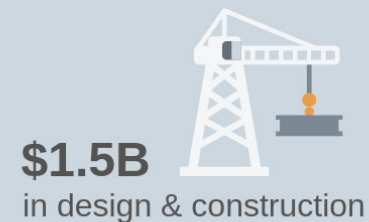
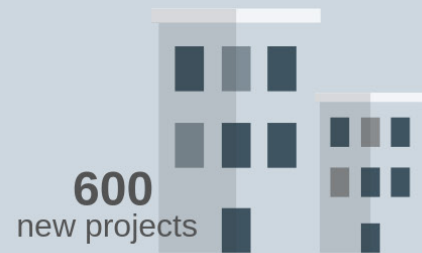


2018 in Numbers



100%
healthcare & health sciences



Partner Brian DiLuiso Speaks
at Lab Design Conference

STRENGTH & EXPERTISE

Value in Healthcare Design

- Future Forward Master Planning
- Lean Processes and Flow
- Cutting Edge VR and Technology
- Outcome Focused, Patient-Centered Design

EMERGING PROFESSIONALS

Supporting the Future

- Launched Cocktails & Critiques Design Competition to develop internal talent and explore new ideas
- Awarded AIA Emerging Professional Friendly Firm
- Launched E4Hcares initiative to increase community involvement

GROWING OUR FOOTPRINT

DC & Tennessee Expansion

- Added a presence in the Nation's capitol
- Establishing roots in the South
- New offices in Dallas & Fort Worth, TX

SHARING KNOWLEDGE

Speaking Engagements

- Healthcare Design Expo & Conference: Neighborhood Hospitals 2.0 and Genetics & Healthcare
- Health Facilities Symposium: Design for Families in End of Life Care
- Lab Design Conference: Electron Microscopes Belong on the Moon

2018 YEAR IN REVIEW

A Year of Growth and Innovation

E4H continued to expand in 2018, growing our depth of healthcare expertise, our breadth across the nation, and pushed the boundaries of thought leadership. We pride ourselves on our forward vision for the future of healthcare and continue to develop and implement trends that improve value and outcomes.





TRENDS IN ACTION

Looking back at our anticipated trends of 2018 and how they were implemented.



STRATEGIC CONVENIENCE

Neighborhood Hospitals

UC Health Grandview, Colorado Springs, CO

- Comprehensive Care
- Prototype Design
- Close to Home

BEHAVIORAL HEALTH DRIVING ED DESIGN

Safety and Compassion

Lifespan, Newport Hospital Emergency Department, Newport, RI

- Increased Treatment Bays
- Expanded Triage Capacity
- Dedicated Clinical Observation Unit and Behavioral Health Suite



MOVE TO MALLS

Retail Locations for Medical Services

TruDerm, multiple locations in TX

- Immediate, Affordable, and High Quality Treatments
- Comprehensive Care

BOOMING ACUTE NEEDS

Need for Single Patient Rooms

Eastern Maine Medical Center, Bangor, ME

- Maximize Efficiency of Space and Staff
- Design for Flexible Acuity

2019 TRENDS

Looking Ahead at Healthcare Design Trends

DESIGNING FOR RESILIENCY

How will physical facility perform in the face of a natural or man-made disaster?

Mat-Su Valley Regional Medical Center, Palmer, AK

- Sustaining a 7.0 magnitude earthquake



WELLNESS INTEGRATION

Shifting focus to preventative, population health

Baylor Scott & White The Heart Hospital, Plano, TX

- Nutrition
- Full Gym
- Preventative Screening



GENOMIC EDITING

Translational medicine knowledge sharing between academics, pharmaceutical industry, and healthcare

Micromedicine Facility, Waltham, MA

- Lab
- Open Benches
- Bio-safety Cabinets

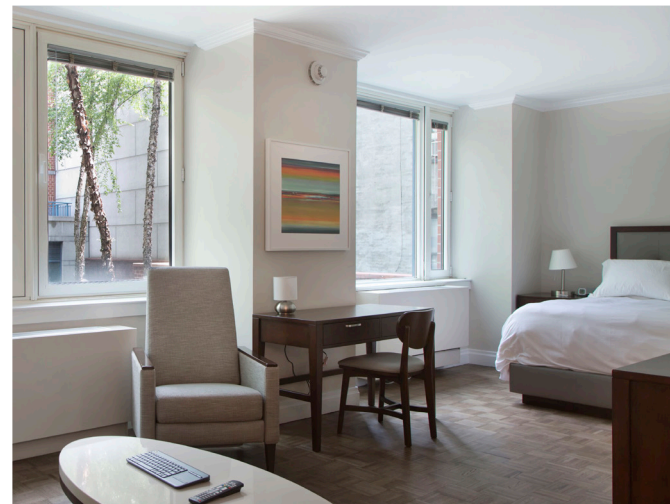


BOUTIQUE MEDICAL CENTERS

Quality, convenience, and customization

Hospital for Special Surgery Orthopedic Center of Excellence, Palm Beach, FL

- Diagnostics Services
- Ambulatory Surgery
- Rehabilitation
- Sports Performance Programs



LOW ACUITY PATIENT CARE FACILITIES

Patients undergoing treatment can be housed in hoteling facilities to improve access & outcomes

Memorial Sloan Kettering Cancer Center's 75th Street Patient Residence, New York, NY

- Lower Real Estate Costs
- Care Coordination
- Convenient Access
- Infection Prevention

E4H's 2019
Healthcare Facility
Design Trend Predictions
[Read More](#)

